

TOWN OF BRECKENRIDGE
OPEN SPACE ADVISORY COMMISSION
Monday, January 18, 2016
Lower Level Conference Room
Breckenridge Town Hall
150 Ski Hill Road

| | | |
|------|---|-----------|
| 3:30 | Site Visit to Gold Run Nordic Center (Meet at Town Hall and bring a fat bike if possible) | |
| 5:30 | Call to Order, Roll Call | |
| 5:30 | Discussion/approval of Minutes – December 14, 2015 | 4 |
| 5:35 | Discussion/approval of Agenda | |
| 5:40 | Public Comment (Non-Agenda Items) | |
| 5:45 | Staff Summary | |
| 5:50 | Open Space | |
| | • Town Council Update | |
| | • State of the Open Space Report | 9 |
| | • Open Space Expenditures Pie Chart | 19 |
| | • Wellington Bus Turnaround | 20 |
| | • Fat Bike Use Discussion | |
| 7:15 | Executive Session | |
| 7:45 | Adjourn | |

For further information, please contact the Open Space and Trails Program at 970-547-3155 (Scott) or 970-547-3189 (Tony).

Memorandum

To: Breckenridge Open Space Advisory Commission
From: Open Space Staff
Re: January 18, 2016 Meeting

Open Space**Town Council Update**

Council Representative Erin Gigliello will provide an overview of recent Town Council discussions and decisions.

State of the Open Space Report

Attached, please find a copy of the 2016 State of the Open Space Report, which provides an overview of the open space program's accomplishments between the program's 1997 inception and the end of 2015.

Staff will briefly discuss the content of the report for BOSAC and requests BOSAC answer the following questions:

- 1. Does BOSAC have any questions regarding the content of the report?*
- 2. Does BOSAC have any suggested edits for the report before it is presented to Town Council?*

Open Space Expenditures Pie Chart

Attached is a pie chart that outlines the open space program's budgeted expenditures for 2016. Staff will provide a brief overview of the expenditures and requests BOSAC answer the following question:

- 1. Does BOSAC have any questions regarding the pie chart or the program's 2016 expenditures?*

Wellington Bus Turnaround

Attached is a draft design of the proposed bus turnaround serving the eastern end of the Wellington Neighborhood. Bus circulation for the Wellington Neighborhood has proven challenging and both the Town Council and BOCC have asked staff to seek a creative solution to this issue.

As you can see by the map, the new proposal includes a bus turnaround located on Town/County open space with additional upstream grading. The recommended approach would be to remove a portion of the dredge piles adjacent to the existing neighborhood to meet the bus turnaround standards.

As an additional public benefit of the proposal, staff has recommended that the existing ponds alongside French Gulch Road be covered to address safety concerns with the open water. Dredge rock material will be used to cover the ponds, which were originally installed to capture the abandoned mine waste now being removed via the Wellington Oro water treatment plant (zinc and cadmium which occur at levels that are a threat to

aquatic life including fish and invertebrates in French Creek). The EPA has evaluated the bus stop proposal and their staff generally supports the concept. The EPA requires the ponds be covered by a minimum of two feet of clean fill. The EPA also has funds in escrow that could potentially be used to offset the project costs for the Town and County.

Staff requests BOSAC review the attached proposal and answer the following questions. OSAC reviewed this proposal at its January 6th meeting and supported the plan. Based on OSAC's direction, two trail connections (between the neighborhood and the bus stop and between the bus stop and the proposed Wellington Trail) were added.

1. *Does BOSAC have any questions regarding the bus turnaround proposal?*
2. *Does BOSAC support the use of open space lands to accommodate this public benefit, including the covering of the ponds?*

Fat Bike Use Discussion

Fat biking has continued to grow in popularity, both at the Gold Run Nordic Center and on the Town and County trails. The site visit prior to the BOSAC meeting should provide some insight into the nature of fat bike use at the Nordic Center.

Based on public feedback, the Gold Run Nordic Center has recently revised its fat biking policy so that biking is allowed on multiple trails seven days per week (Preston Loop, Gold Run, Smuggler) and is prohibited altogether from several other routes (Hoodoo Voodoo, Prize Box, Pegasus, Buffalo Flats, Bronco Dave's). Silver Star has been closed for the season for irrigation construction reasons. The snowshoe routes have also become more popular for fat bikes since the experience is more compacted singletrack than the wider groomed Nordic trails. Gold Run's amended policy accommodates cyclists on many routes seven days a week while also offering skier-only routes for skiing customers. Gold Run continues to be the only local Nordic center to accommodate fat bikes and as such has experienced a significant increase in that use this season.

The backcountry trails have also experienced a significant increase in fat bike usage this winter. Accordingly, staff recently added a fat bike trail conditions page on the website which will be updated as conditions change and the season progresses. Anecdotal evidence suggests that fat bike use continues to expand during winter months, particularly on the French Gulch/Sallie Barber/Barney Ford Trail system. Part of the goal of the new fat bike trails conditions page is to educate users about where the appropriately compacted trails exist. This information will hopefully help educate winter users of all types so they can meet their recreational goals. The USFS policy has not changed and wheeled vehicles are currently prohibited on all routes

Staff requests BOSAC discuss fat bikes, including the site visit, and answer the following questions:

1. *What comments or questions does BOSAC have regarding the increasing use of fat bikes on Town trails?*
2. *Does BOSAC have any suggestions regarding how to best manage the increasing use of fat bikes on Town trails?*

Roll Call

Jeff Cospolich called the December 14, 2015 BOSAC meeting to order at 5:35 pm. Other BOSAC members present included Jeff Carlson, Jeffrey Bergeron, Craig Campbell, Erin Gigliello, Chris Tennial and Elizabeth Miller. Staff members present were Scott Reid, Tony Overlock, Joel Dukes and Mark Truckey. Brian Lorch from Summit County Open Space, OSAC member Todd Rankin, and Marika Page from the Gold Run Nordic Center were also present.

Approval of Minutes

The minutes were approved as presented.

Approval of Agenda

The agenda was approved as presented.

Public Comments:

There were no public comments

Staff Summary

Colorado Fourteeners Initiative Grant Update

Attached is a final report from the Colorado Fourteeners Initiative (CFI) which outlines how the Town's 2015 grant funds were used. As you can see from the report, the \$2,500 grant from the Town of Breckenridge funded important trail work and user education on Quandary Peak. Barring any questions or concerns from BOSAC, staff will consider the 2015 CFI grant successfully closed.

Mr. Tennial: Is there more we can do to leverage money to help repair an important and popular trail in our backyard?

Ms. Miller: I would like to see what they could do with more money. Is this report specific to the Town of Breckenridge?

Mr. Reid: This report directly relates to the Town of Breckenridge's grant and the work that was completed with the money that they received. We can check next year to see if they would like to receive an increase in funding.

Mr. Campbell: The Quandary Peak trailhead has become very popular in recent years, with the trailhead overflowing with cars.

Mr. Cospolich: Mr. Lorch, does the county donate to the Colorado Fourteener's Initiative?

Mr. Lorch: No, we do not have a grant funding process in place like the Town of Breckenridge.

Fat Bike/Winter Use Update

Based on previous BOSAC direction, staff is working with Breck Bike Guides to revise their current license agreement to allow winter grooming of several Town trails for fat bike and other non-motorized winter users. In addition, staff has been fielding questions from the press and the public regarding the growing popularity of fat bike use in the area. To date, the Town and Summit County

have allowed fat bike use to continue on joint Town/County trails and open space properties. However, the U.S. Forest Service has indicated that the existing Forest Plan for the White River National Forest prohibits winter bicycle use on most trails on the Dillon Ranger District. Staff is currently trying to gather additional information from the USFS staff and will report back to BOSAC once the policy is clarified. Also, Town staff plans to attend the [Fat Bike World Conference](#) in Crested Butte in January to learn more about how other communities are managing the increasing fat bike use on winter trails. Staff intends to bring this topic back for discussion by BOSAC once the USFS clarifies its fat biking policy.

Ms. Page: A lot of fat bikers are coming to the Nordic Center because they are looking for a place where they are allowed to ride.

Ms. Miller: Why do you have fat bikers riding on the groomed trails and not the snowshoe trails?

Ms Page: The snowshoe trails are too technical to ride for most beginner fat bikers.

Mr. Bergeron: What is your percentage of use for fat bikers?

Ms Page: By far the majority of the user group is still Nordic skiers, but we are trying to expand business and offer an alternative for a growing recreational segment.

Ms. Gigliello: What are the complaints about?

Ms. Page: When the groomed trails are soft just after a snow storm, the fat bikers will leave a rut. When this happens, we inform the fat bikers to ride on the side of the trail that does not have the set tracks.

Mr. Campbell: Do you provide any education/etiquette rules for fat bikers and Nordic skiers?

Ms. Page: We have signs posted at the Nordic Center with best practices for fat bikers at Nordic Centers. These rules were developed by the International Mountain Biking Association.

Mr. Bergeron: Could you separate use on the trails?

Ms. Page: We thought it would be easier when customers signed up for their pass to inform them that fat bikers would be allowed on Sunday, Monday, and Wednesday. Patrons with season passes, also have the option of skiing at the Breckenridge Nordic Center if they don't want to ski with fat bikers on those particular days.

Ms. Miller: What if there is a big snow day, can you red flag the trail and close it to fat bikers?

Ms. Page: Yes, that could be an option. We are in the process of trying to figure out the best solution and we welcome suggestions.

Mr. Bergeron: With the Nordic center being self sufficient for the first time in 2014, we should grow and maintain a positive image with our patrons, which I think includes welcoming new users and technologies.

Ms. Page: I see a parallel with snowboarding when it first came to the ski areas. It's going to be a little bumpy at first.

Mr. Campbell: Would it be possible to do a site visit to the Nordic Center next meeting?

Mr. Reid: Yes, we could look into that.

Open Space

Town Council Update

Ms. Gigliello: We are moving forward with Denison Placer project. The Council is looking at ways to figure out the housing problem, one of which is hosting a summit housing meeting. Council approved the McCain Master Plan, as well.

Swan River Restoration Update

Mr. Reid: The three hundred thousand dollars that was approved for the Swan River Restoration will likely be split in half between the 2016 and 2017 budgets. No funds will come out of the 2015 budget based on the work done so far.

Mr. Lorch: Our plans are moving forward. We are currently working with designers to figure out the Muggins Gulch road crossing. We would like to see that road only crossing the river once. Hopefully, the contractor will be working by next summer. All the materials will be used on site. The rechannelization project will be completed in one year with some revegetation work done the following year.

Mr. Reid: I would like to remind BOSAC that this is a really impressive project and once completed, will serve as a model for future projects such as French Creek and the McCain/Blue River restoration.

Field Season Update:

Tony Overlock presented a PowerPoint presentation highlighting the 2015 field Season. The presentation covered the Friends of Breckenridge Trails Volunteer Program, Trail Crew projects and summer user counts in Cucumber Gulch Preserve and certain trail heads.

Friends of Breckenridge Volunteer Program

- 320 volunteers
- 1,762 Hours
- \$40,650 Estimated value based on Independent Sector

Trail Crew Major Accomplishments

- Maintenance and improvements to existing system
- Stewardship projects for community and visitors
- New Wellington Bike Park

- 3.2 miles of new trail
 - Wire Patch Trail
 - Weber Gulch Trail
 - ZL Trail
 - Galena Trail
 - Wellington/ Liesel's Luge Trail

Traffic Count Study: Cucumber Gulch

- Since 2009, The Town of Breckenridge Open Space Division staff has conducted trail traffic counts between July 9th and September 30th at the five designated entrances to the Cucumber Gulch Preserve. The data collected is used to track visitor use patterns and help inform management of the Preserve.
- Traffic counts are increasing each year at designated entrances.
- The Toad Alley entrance, across from the Peaks trail saw the largest increase in traffic use.
- Listed below are the most to least popular entrances of Cucumber Gulch Preserve
 - Toad Alley (Across from Peaks Trail)
 - Overlook (Next to Shock Hill development)
 - White Wolf (White Wolf Subdivision)
 - Sauna (East of the Nordic Center)
 - Interstate (West of the Nordic Center)

Traffic Count Study: Sallie Barber Trailhead (Lincoln Town site) & B&B Trailhead

- Sallie Barber Trailhead
 - Average daily counts saw a slight increase this year at 102
 - Average daily counts are higher in the summer than the winter
- B&B Trailhead
 - Average daily counts roughly remained the same at 128
 - Average daily counts are roughly the same in summer and winter

2016 Work Plan

This document, updated annually, outlines the program goals for the year. Staff reviewed the work plan with BOSAC.

Ms. Gigliello: Does this get presented to Council? I would like to make sure there is goal listed about assisting the housing program with establishing parks.

Mr. Reid: We don't typically present this exact document to Council other than in the BOSAC minutes. Assisting with the Blue River Parks plan is included in the document.

Ms. Miller: Mr. Lorch, is there a reason some of the County's portal posts do not have the trails name of the on them?

Mr. Lorch: No particular reason.

Mr. Reid: We plan on revising our trail map soon, if you have any revisions please get them in.

Mr. Carlson: Made a motion to approve the 2016 work plan. Ms. Miller seconded the motion.

BOSAC unanimously approved the 2016 work plan.

Executive Session

Ms. Miller made a motion to go into Executive Session to discuss property acquisition negotiations at 7:30 pm. Mr. Tennal seconded the motion.

Mr. Cospolich made a motion to come out of executive session at 7:45 pm. Mr. Carlson seconded the motion. BOSAC exited the Executive Session at 7:45pm.

Mr. Tennal made a motion to adjourn the BOSAC meeting. Ms. Miller seconded the motion. The meeting was adjourned at 7:47 pm.

Next Meeting

The next regular meeting is scheduled for January 18th at 5:30pm, in the Lower Level Conference Room at the Breckenridge Town Hall, 150 Ski Hill Road.

Jeff Cospolich, Chair



2016



9 of 20 OPEN SPACE & TRAILS



Photo credit: Liam Doran

Open Space Program At a Glance

1996

Breckenridge voters approve 0.5% sales tax to fund open space acquisitions & management

\$19,474,332

TOB Funds used to date for open space acquisitions

\$11,517,892

Funds contributed by Summit County Government towards joint purchases of open space

\$240,000

Price of the Swan River Placer (AKA, the Sanitation District Parcel), the program's first purchase.

104

Size in acres of the Laurium Mine property, the largest open space purchase since 2006

2012

Year the Golden Horseshoe Management Plan was adopted

1,683

Number of acres jointly purchased with Summit County through the B&B Mines acquisition, the program's largest

6

Number of seasonal Town Trail Crew staff charged with maintaining the extensive trail network providing public access to our open space properties

124

Total number of all open space acquisitions

4,610

Total number of acres protected as open space

MISSION STATEMENT:
The purpose of the Breckenridge Open Space Program is to preserve lands and trails through acquisition and stewardship efforts, with the goal of maintaining the unique mountain character of the Upper Blue Basin and our community's quality of life.

Open Space Acquisitions

In 1996, a voter initiative passed which dedicated a 0.5% Town sales tax to open space acquisition and management. In the 18 years since its adoption, the Town's open space program has acquired a total of **4,491 acres** of property through purchases, land trades, dedications and joint purchases with Summit County Government. Of the 4,491 acres, 3,925 acres have been purchased and 566 acres have been acquired through land trades and dedications.

| | Town & County Jointly Acquired Acreage | Town Acquired Acreage |
|----------|--|-----------------------|
| Pre-1997 | 13.68 | 105.08 |
| 1997 | 171.55 | 15.5 |
| 1998 | 80.81 | 63.86 |
| 1999 | 153.69 | 19.33 |
| 2000 | 34.95 | 225.67 |
| 2001 | 610.68 | 10.94 |
| 2002 | 87.47 | 40.05 |
| 2003 | 38.72 | 62.02 |
| 2004 | 59.23 | 154.83 |
| 2005 | 1854.75 | 2.89 |
| 2006 | 0 | 6.85 |
| 2007 | 64.83 | 11.19 |
| 2008 | 27.44 | 3.64 |
| 2009 | 65.58 | 7.62 |
| 2010 | 73.78 | 0 |
| 2011 | 124.29 | 0 |
| 2012 | 86.25 | 0 |
| 2013 | 69 | 5 |
| 2014 | 196 | 0 |
| 2015 | 63.34 | 2.3 |



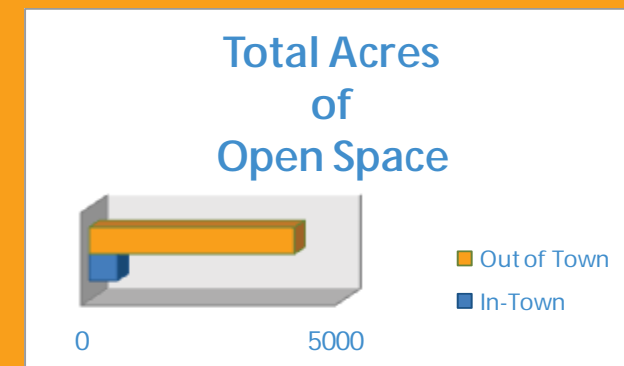
B & B (Out of Town)



Prospector Park (In-Town)

Did You Know?

The majority of open space acquisitions have been located outside of Town limits (4,047 acres out of Town versus 563 acres in-Town). The development philosophy in the Joint Upper Blue Master Plan focuses development in the core of Town and minimizes development in the surrounding backcountry.



Open Space Comparison 1996 and 2015

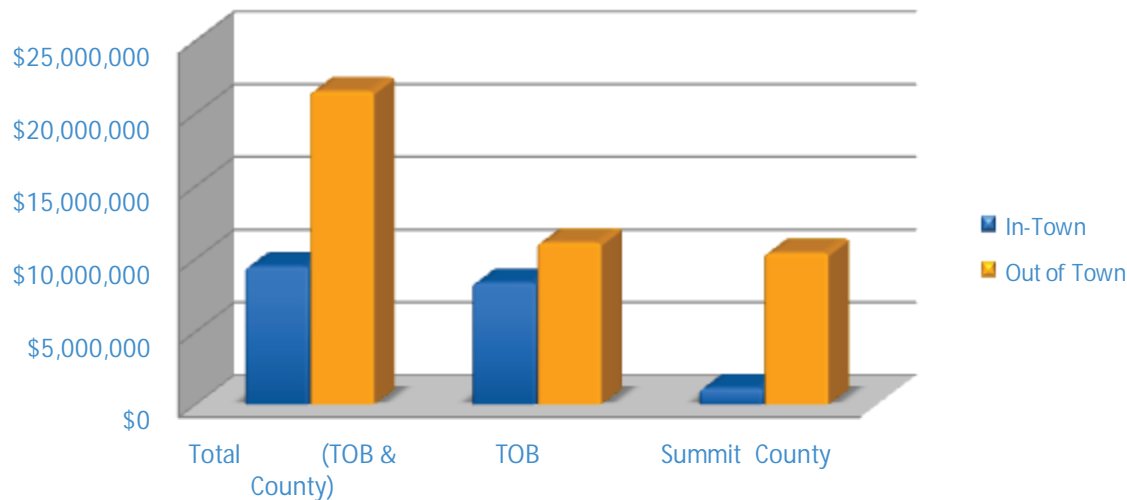
Prior to the establishment of the Open Space program in 1997, the Town owned **119 acres** of open space. Today, the program manages **4,610 acres** of open space, **3,848 acres** of which were jointly acquired with Summit Count Government. A number of the joint purchases lie just outside the Town boundary.



Acquisition Expenditures

The Town has spent \$19,474,332 on open space acquisitions since the start of the Open Space Program. Of this amount, \$8,358,556 (43%) has been used for in-Town acquisitions and \$11,115,776 (57%) has been used for out of Town acquisitions.

Total Open Space Expenditures

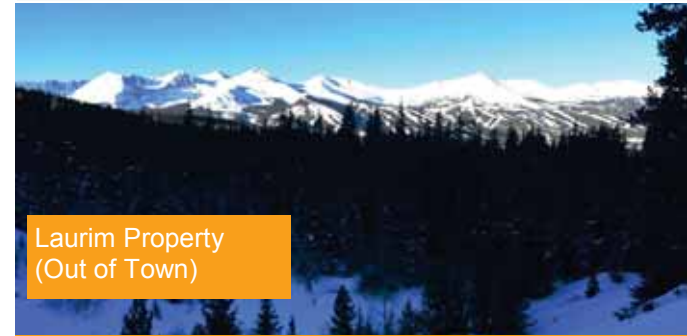


| | Total (TOB & County) | TOB | Summit County |
|--------------|----------------------|---------------------|---------------------|
| In-Town | \$9,468,556 | \$8,358,556 | \$1,110,000 |
| Out of Town | \$21,523,668 | \$11,115,776 | \$10,407,892 |
| Total | \$30,992,224 | \$19,474,332 | \$11,517,892 |

*This is total amount Summit County has spent in the Upper Blue Basin. In addition to the Upper Blue Basin, Summit County purchases open space in its other three basins.



F&D Placer (In-Town)

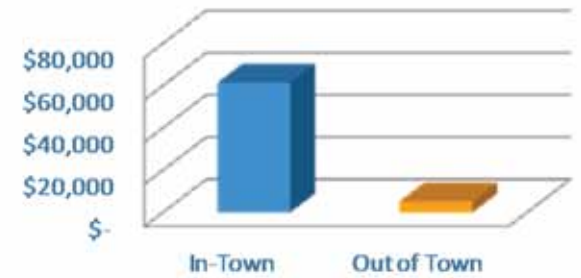


Laurim Property (Out of Town)

Did You Know?

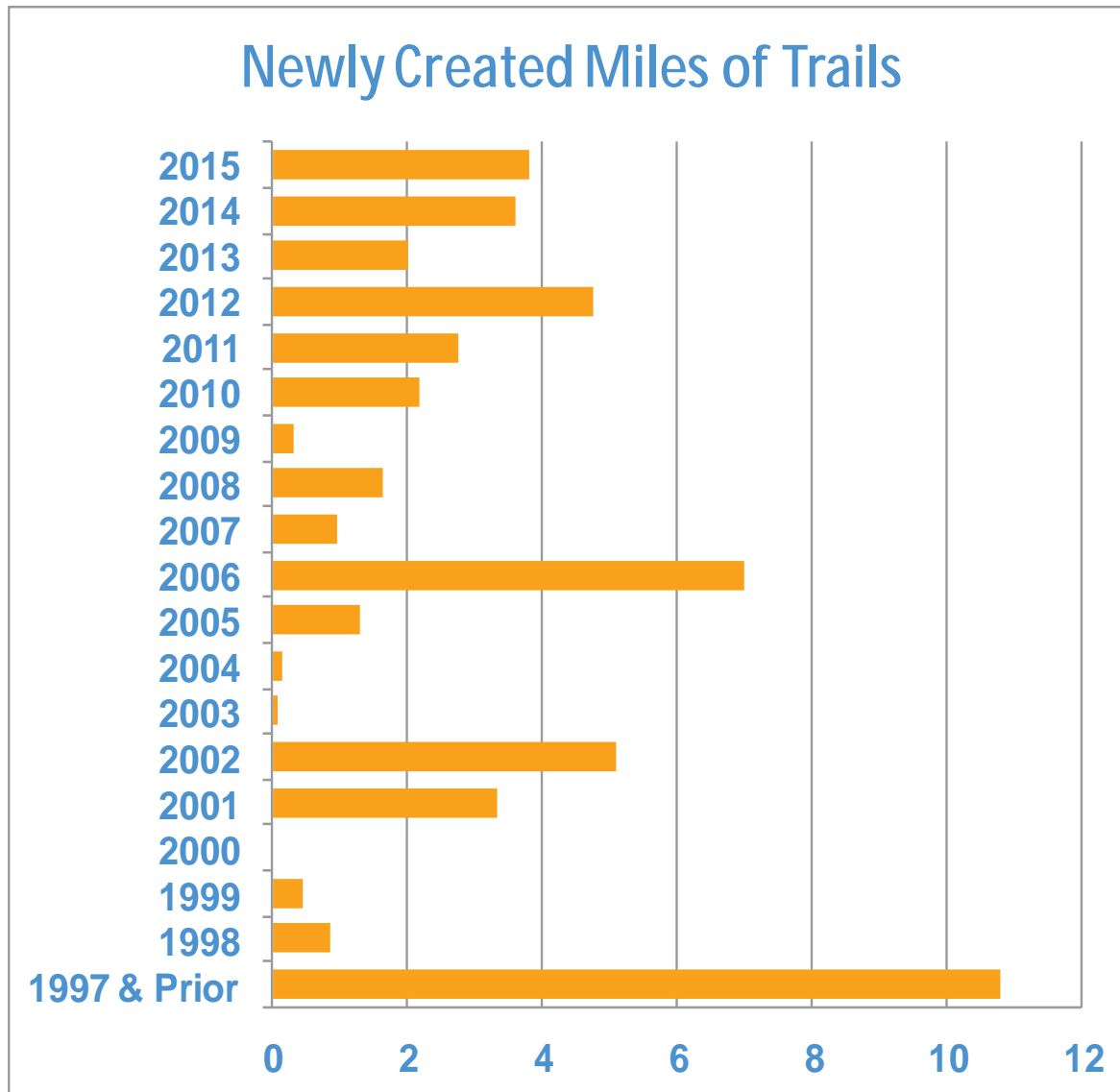
On a price-per-acre basis, in-Town acquisitions are substantially more expensive (\$59,928 per acre) than out of Town acquisitions (\$5,754 per acre). Of the 563 in-Town acres acquired, only 158 have been purchased.

Acquisition Price Per Acre



Trails

Prior to the establishment of the Open Space program in 1997 the Town managed **10.8 miles** of trails. Today the program manages **54.7 miles** of multi-use trails.



Wire Patch Trail



Educational Signage



Annual Trails Open House

Did You Know?

In addition to the Town maintained network of trails, over 100 miles of designated trails can be connected to on nearby National Forest lands. Taken together, this trail network is one of the largest and most diverse in the country.

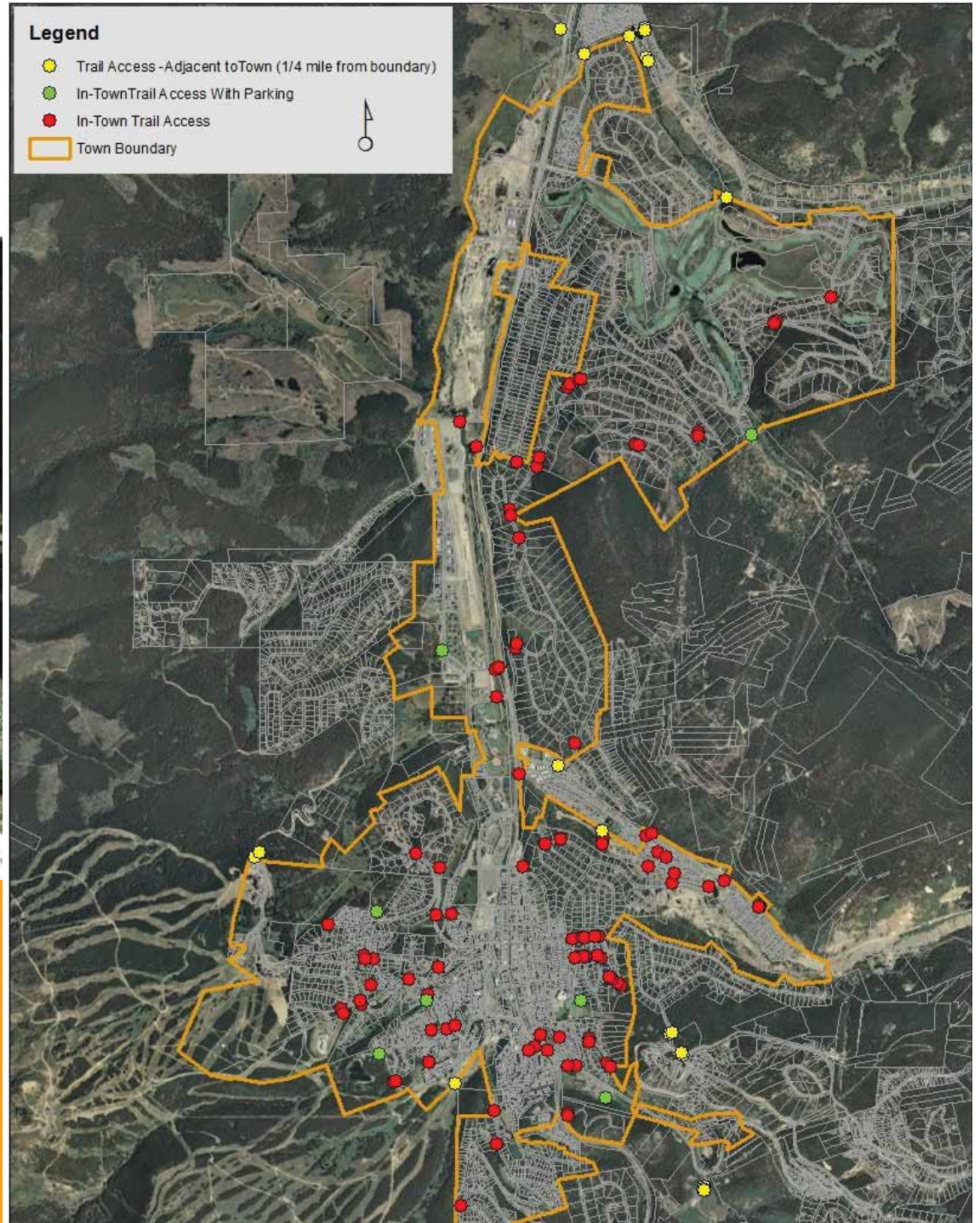
Trail Access

The Open Space program provides **120 trail access portals** located within the Town or within 1/4 mile of its boundary. The numerous portals provide convenient, legal access to Town-maintained trails.



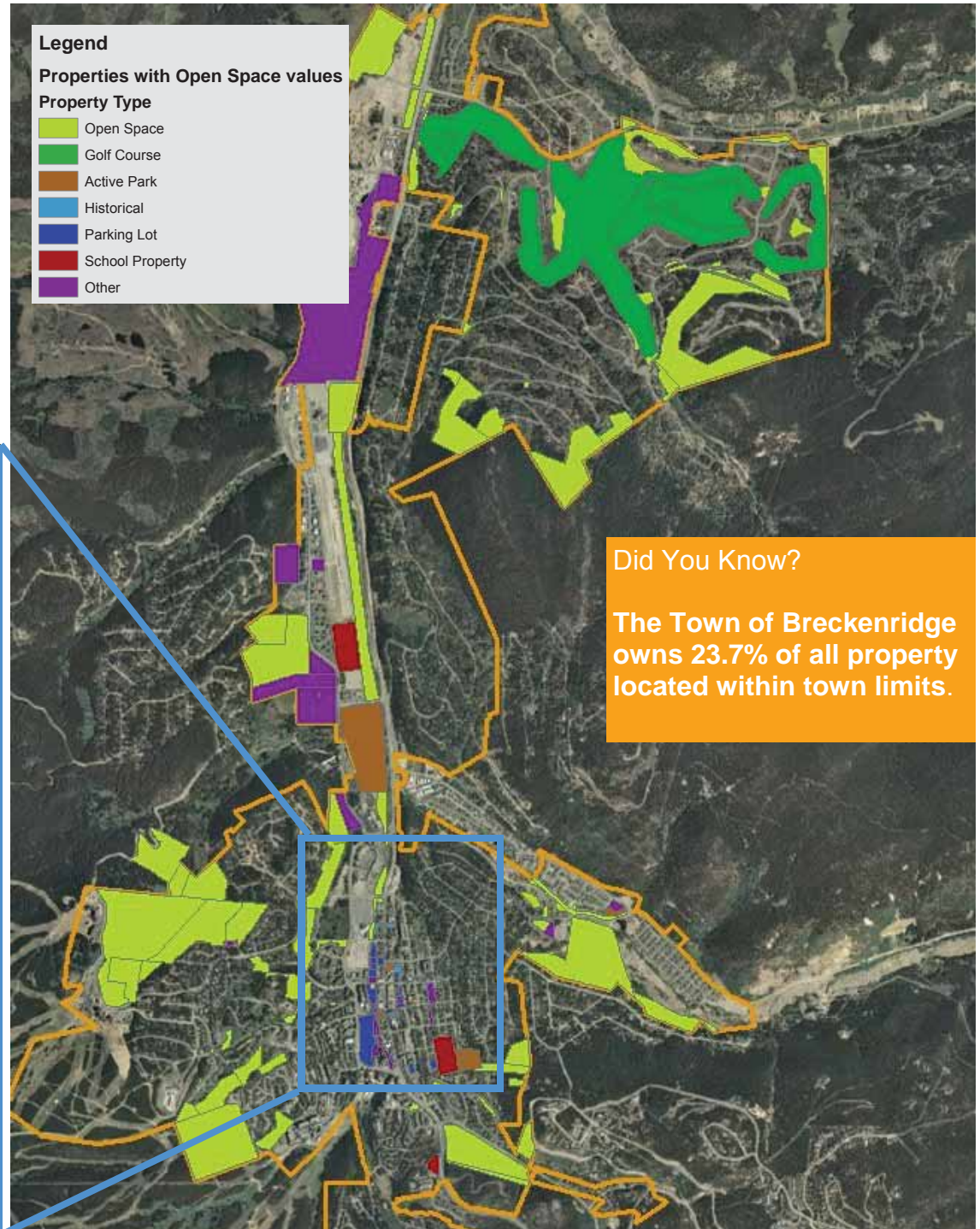
Did You Know?

80% of all in-Town properties are within 1/4 mile of a Town maintained trail access portal.



Other In-Town Properties with Open Space Values

Other community properties not managed by the open space program offer open space values such as relief from development, active park space, private open space and visual backdrop. Examples of properties that exhibit these qualities include historical sites, school properties, active parks, and the golf course. Many of the in-Town open space parcels were dedicated through the development permit process.



2015 Accomplishments

Acquisitions



2015 Acquisitions (66 acres)

- Goldsmith Properties
- Aye Kay/ Joe Glidden Claims
- Storm Placer
- 208 Lee Lane TDR
- 131 Burro Lane
- Kingfisher Claims
- Onandega #1 Claim
- Quandary Village TDR
- Tract E-2, Shock Hill

Golden Horseshoe Road Improvements



- National Forest Foundations Grant
- 1.8 miles of roads closed and restored
 - 2 miles of single track closed and restored
 - 3 acres of restored wildlife habitat

Wellington Bike Park



- 3 Flow Trails
- Elevated Pump Track
- Skills Area
- Strider Track

Volunteers



- 320 Volunteers
- 1,762 Total Hours
- \$40,650 Value

Partnerships



Trails



- ### New Trails & Realignments (3.8 miles)
- Galena Extension
 - Weber Gulch Trail

- ZL Trail
- Wire Patch Trail
- Liesel's Luge

Blue River Trail



Did You Know?

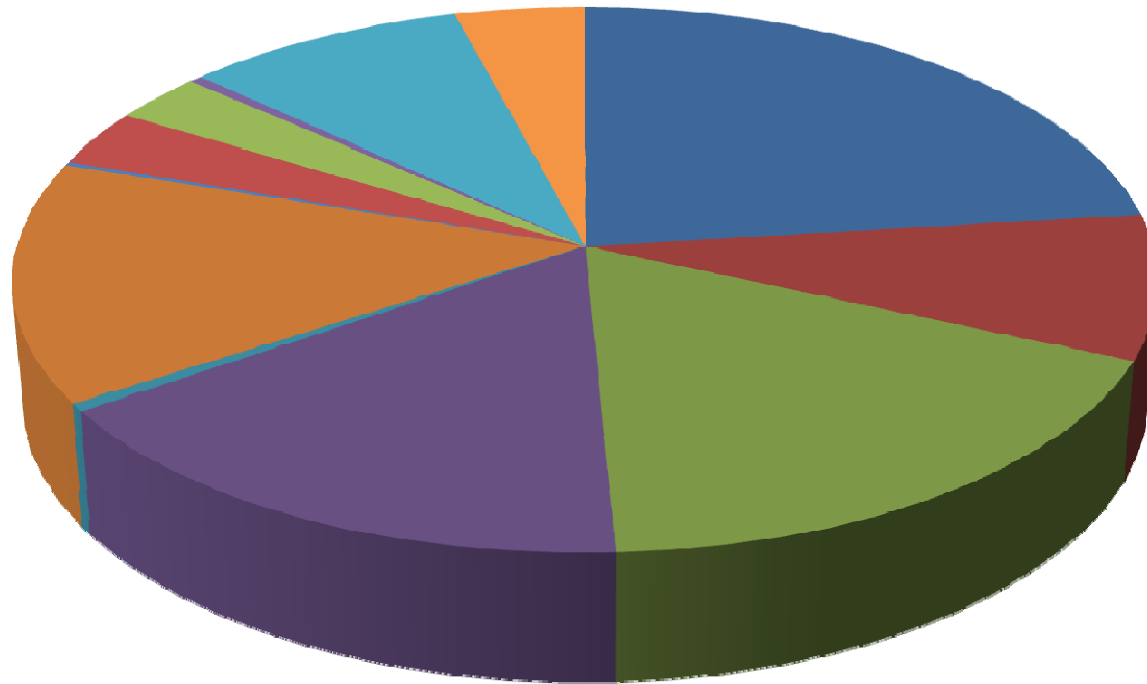
In 2015, the Open Space program's budgeted revenues were \$2,694,670.



For more information please visit www.TownofBreckenridge.com



Proposed 2016 Open Space Budget



- Land Acquisitions (23% of total budget)
- Wellington/Oro Treatment Plant (9%)
- Repayment to General Fund for B&B Loan Payoff (18%)
- Habitat/River Restoration (16%)
- Historic Structures Stabilization (<1%)
- Administration (14%)
- Legal Services (<1%)
- Consultants (3%)
- Other professional services/forest mgmt (3%)
- Other contracted services/surveying (<1%)
- Trails construction and maintenance (9%)
- Hoosier Pass Rec Path Fund (4%)

PRELIMINARY 1.12.16



ENGINEERING
P.O. Box 168
150 Ski Hill Road
Breckenridge, Colorado 80424
(970) 453-2251
www.townofbreckenridge.com

French Gulch Bus Turnaround Town of Breckenridge, Colorado



ISSUE DATE: 12/31/2015

REVISIONS:

| # | DATE | DESCRIPTION |
|---|------|-------------|
| | | |
| | | |
| | | |
| | | |
| | | |
| | | |
| | | |
| | | |
| | | |
| | | |
| | | |
| | | |

DRAWN: _____ REVIEWED: _____

PROJECT NUMBER: _____

SITE PLAN

SHEET NUMBER

OPTION 4